

Q1//

A-What is the full name and the purpose of this device?

B-What are the Temperature adjustment of PCR ?



Q2- How you can normalize these samples concentration by adding of the DEBIC-treated water?

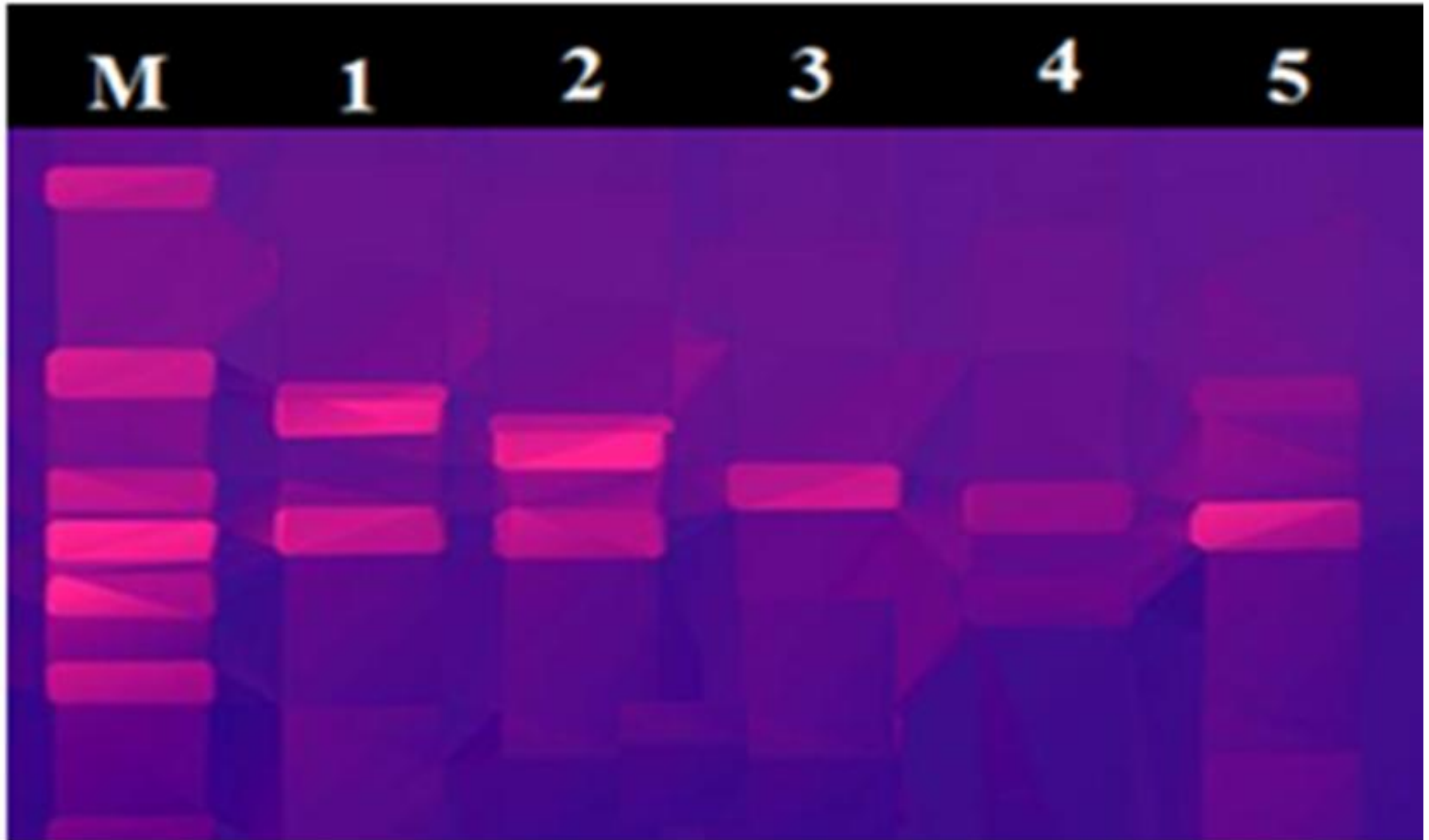
- Sample 1=192.5
- Sample 2=188.3
- Sample 3=223.77
- Sample 4=133.6

Q3- Calculate relative expression of LH-R gene in normal and tumor uterus cells using the (Livak) Method

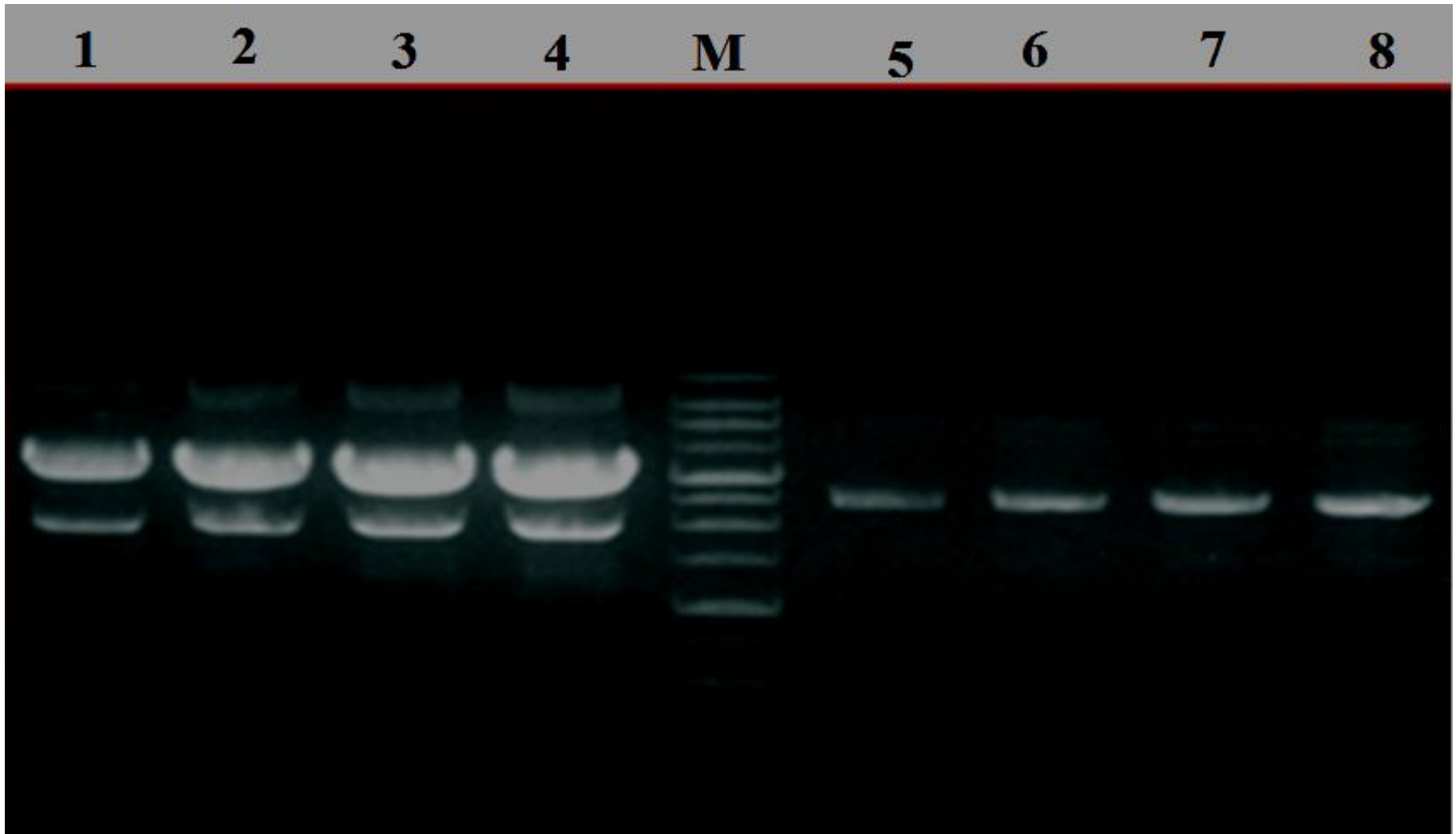
<u>Sample</u>	<u>Ct LH-R (target)</u>	<u>Ct GAPDH (reference)</u>
calibrator	16	18
test	14	18

**Q4// Compare between the PCR
and RT-PCR master mix**

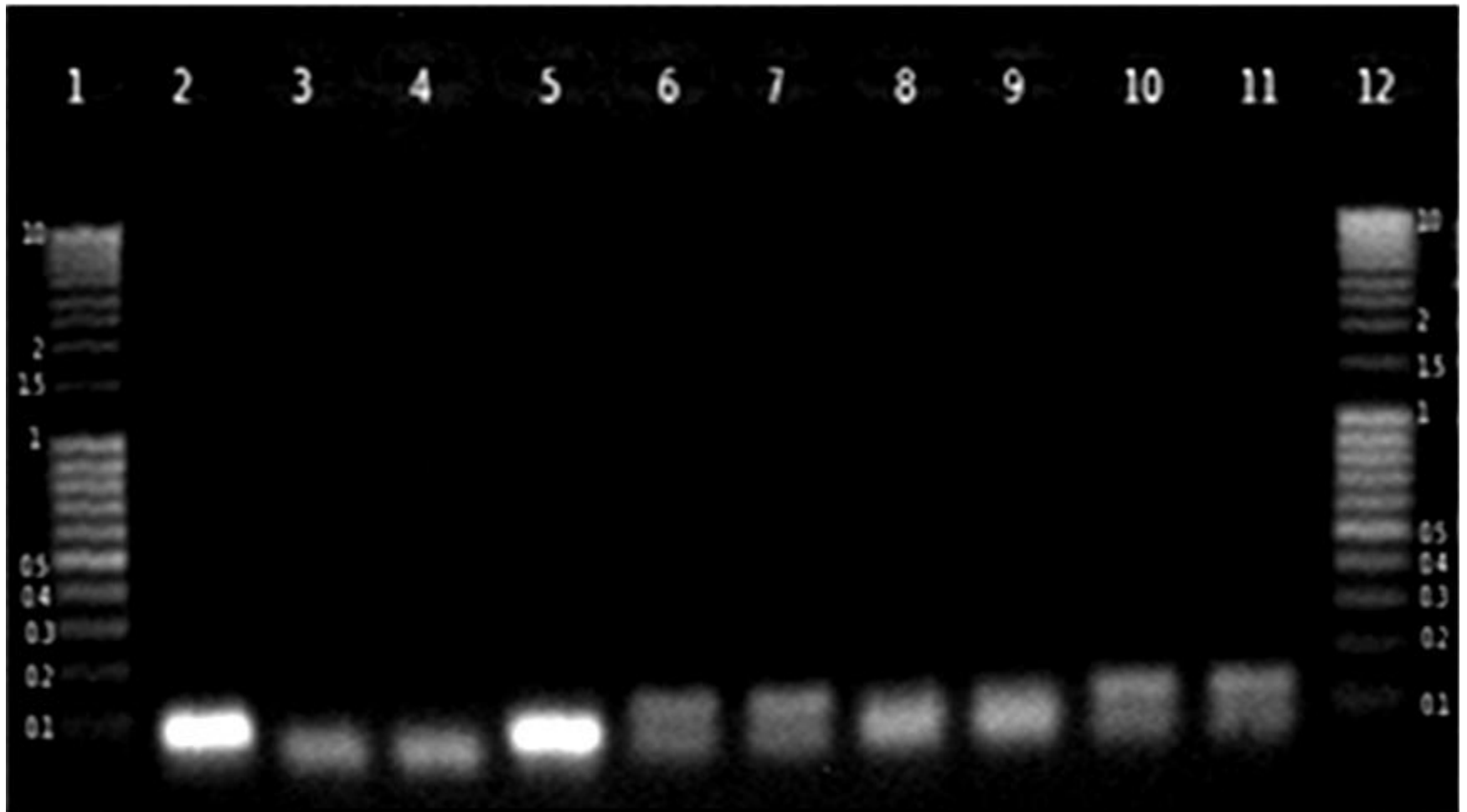
Q5//What is the analysis of this gel electrophoresis RT-PCR product?



Q6// What is the analysis of gel electrophoresis in this image?



Q7// Determined the optimal annealing temperature ?

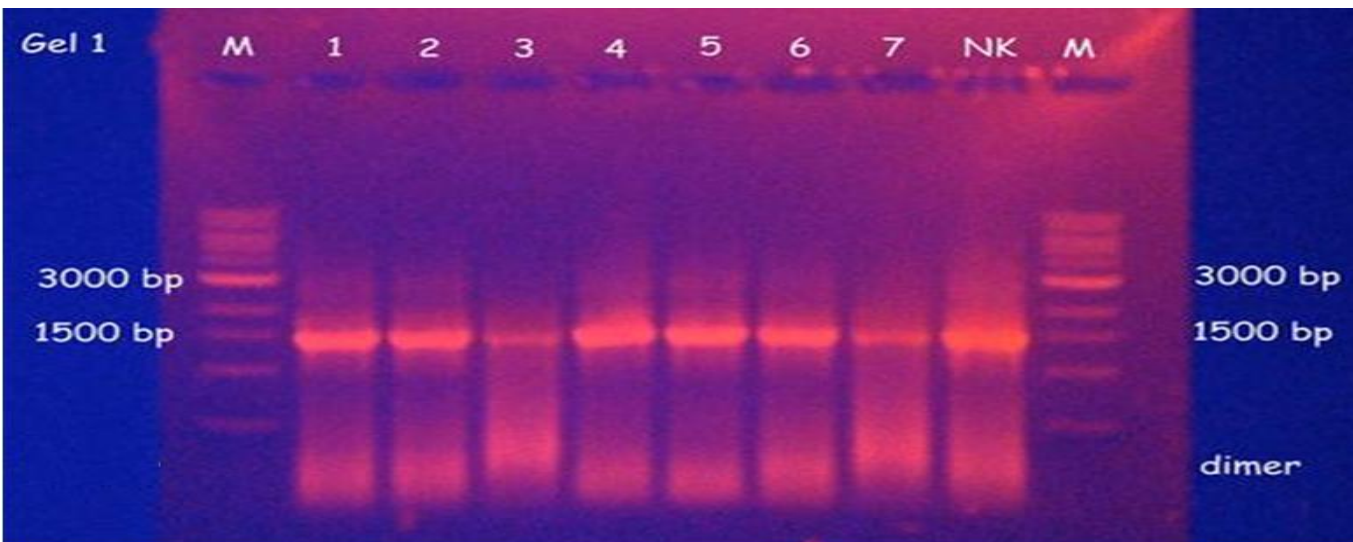


Q8//

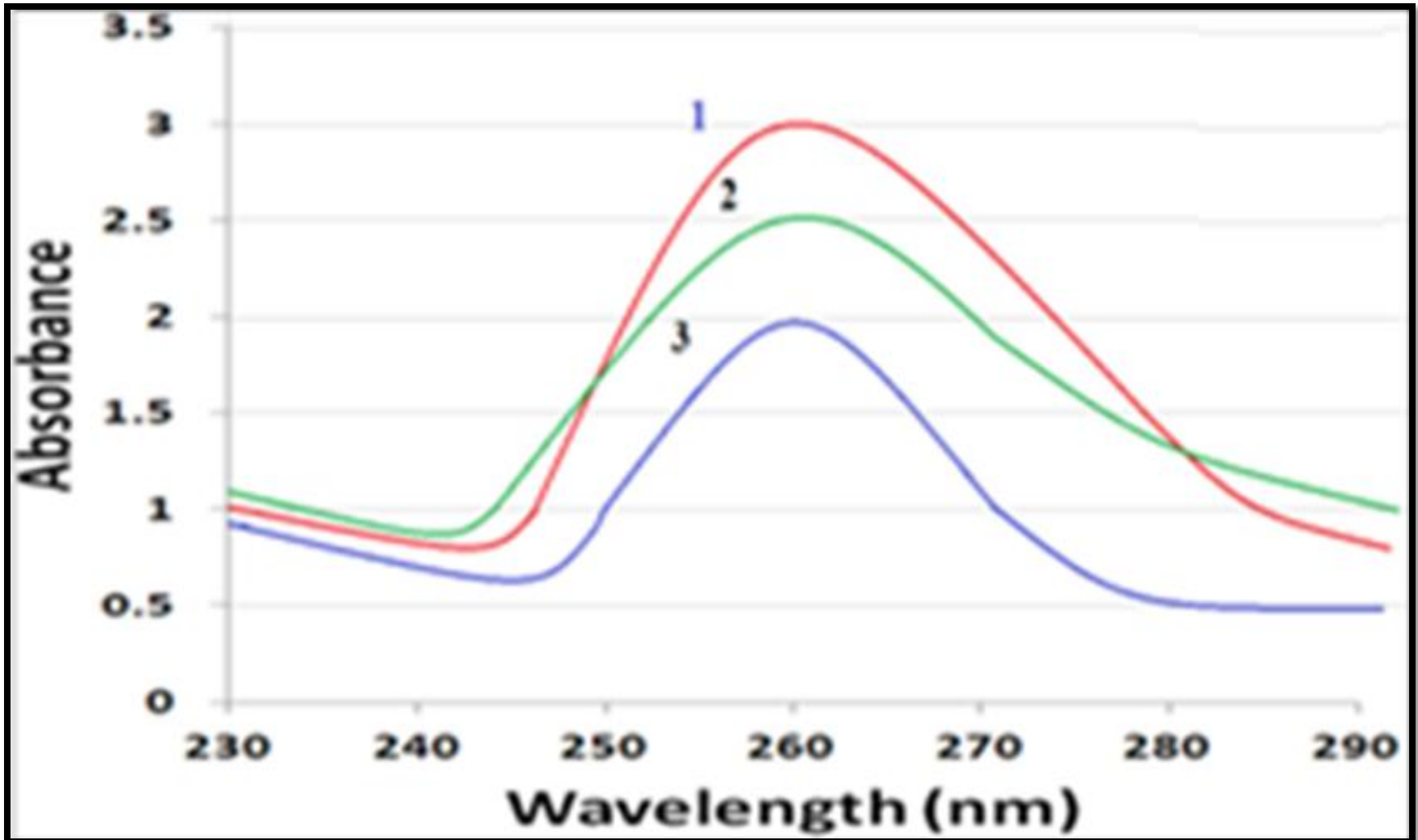
A-How you can avoid of primer-dimer?

B- What is type of this Dimer

```
4 bp, delta G = -6.6 kc/m (bad!) (worst= -36.6)
      5' GGGAAAATTCCAGGATCTAT 3'
          ||||  ||||
      3' TATCTAGGACCTTAAAAGGG 5'
```



Q9// What are the purity of DNA samples (1,2,3)?



Q10// Full the blanks of this rt-PCR figure ?

