

Q1// What are the factors which effected on choice of DNA extraction method?

Q2// Give the reasons of add this reagent in Step 3. of DNA extraction.

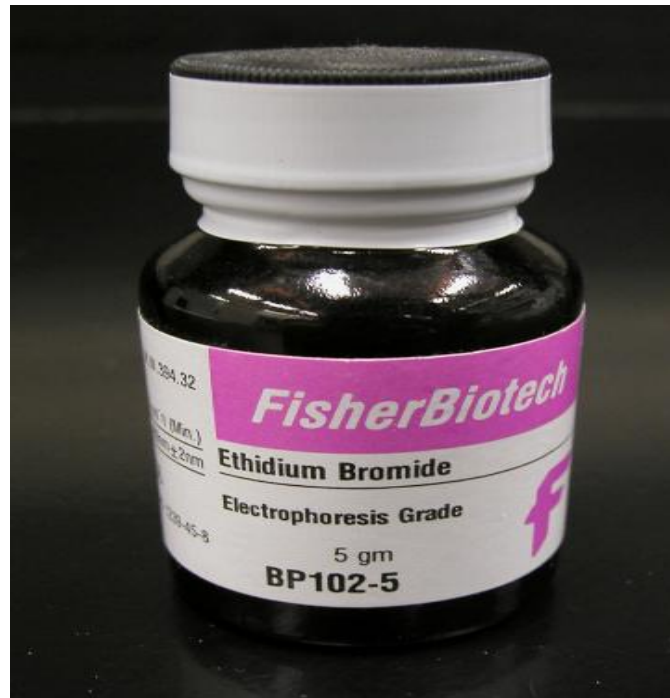


Q3//

What is the purpose of this device in study of the DNA typing



**Q4// Enumerate the alternatives to
this Stain?**

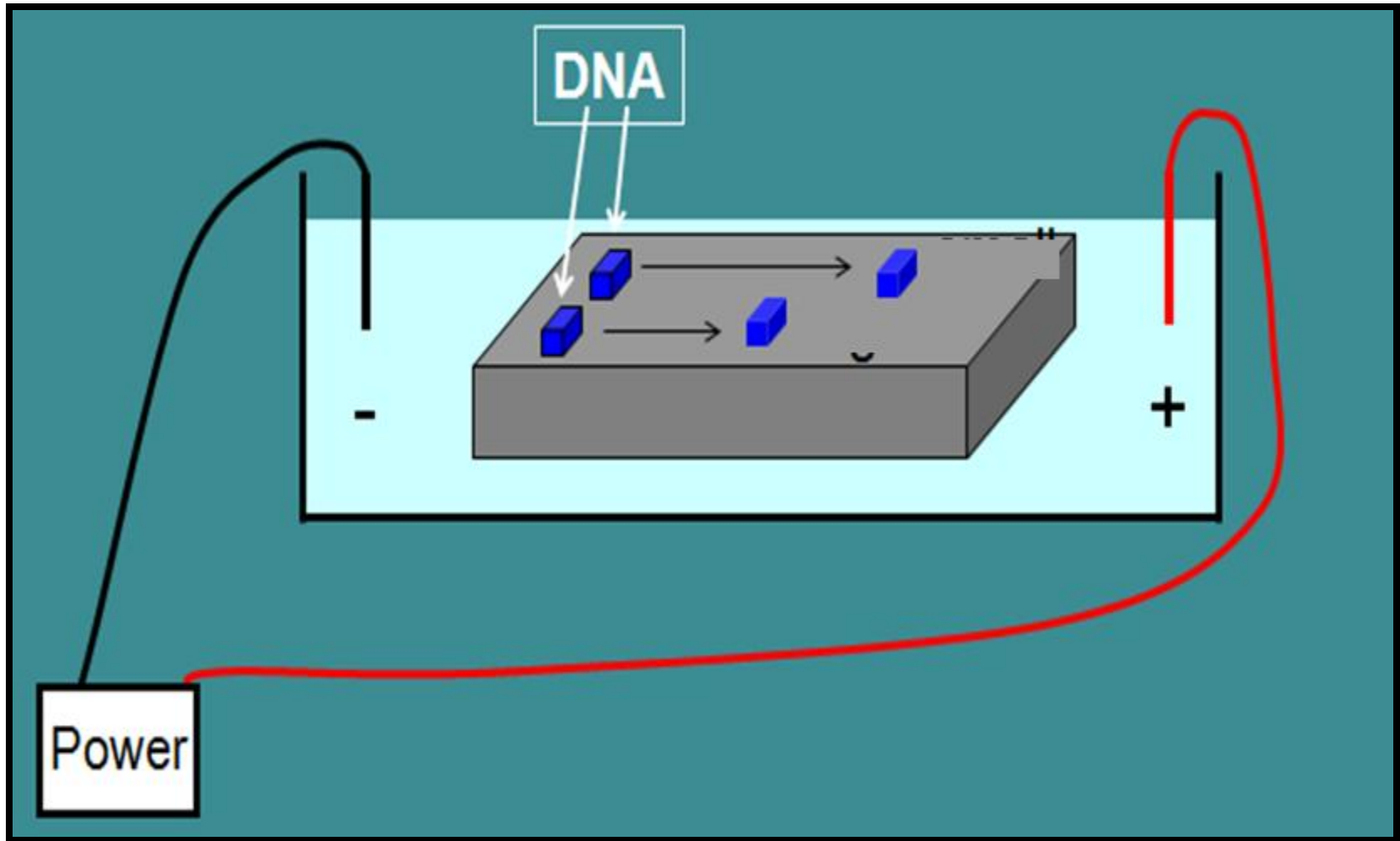


Q5//Prepare the Tris/Borate/EDTA?

- 1- (10X) Stock solution 1 liter (40 ml of 0.5 M EDTA)
- 2- (0.5X) Working solution 200 ml.



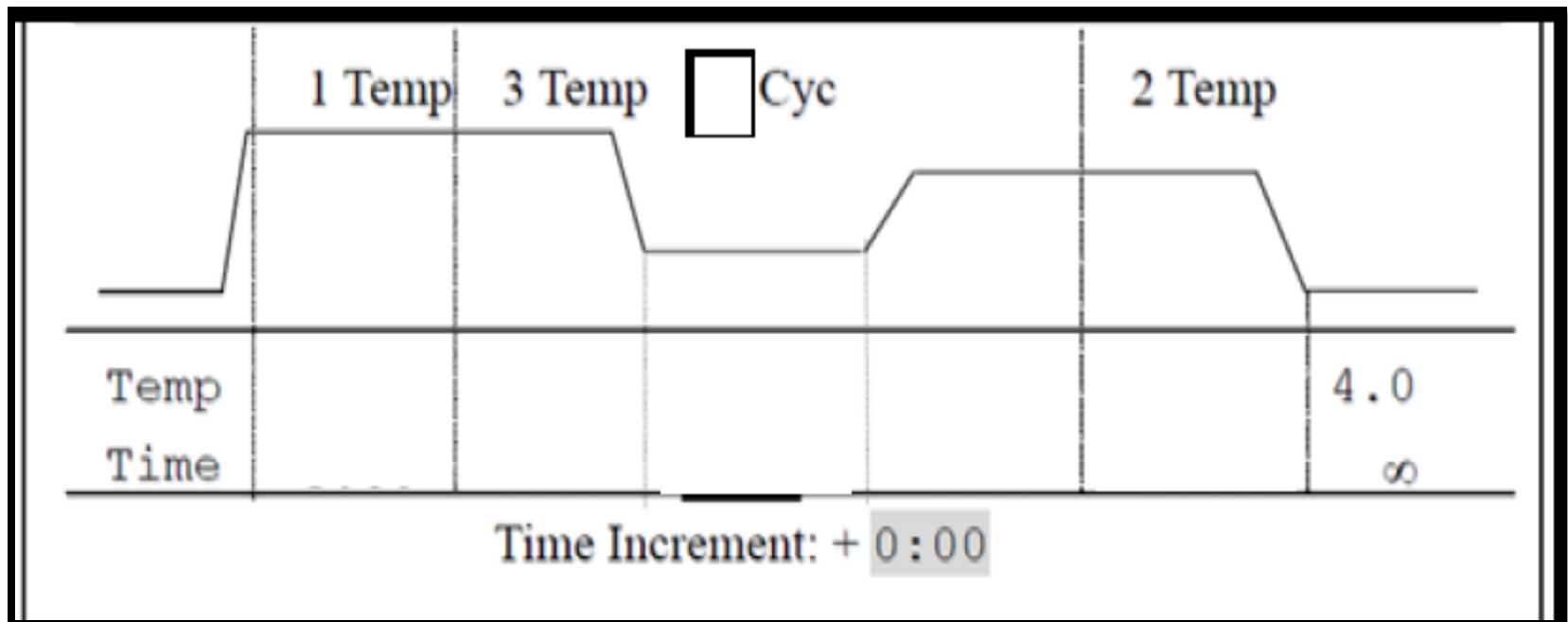
Q6// How fast will DNA migrate?



Q7//

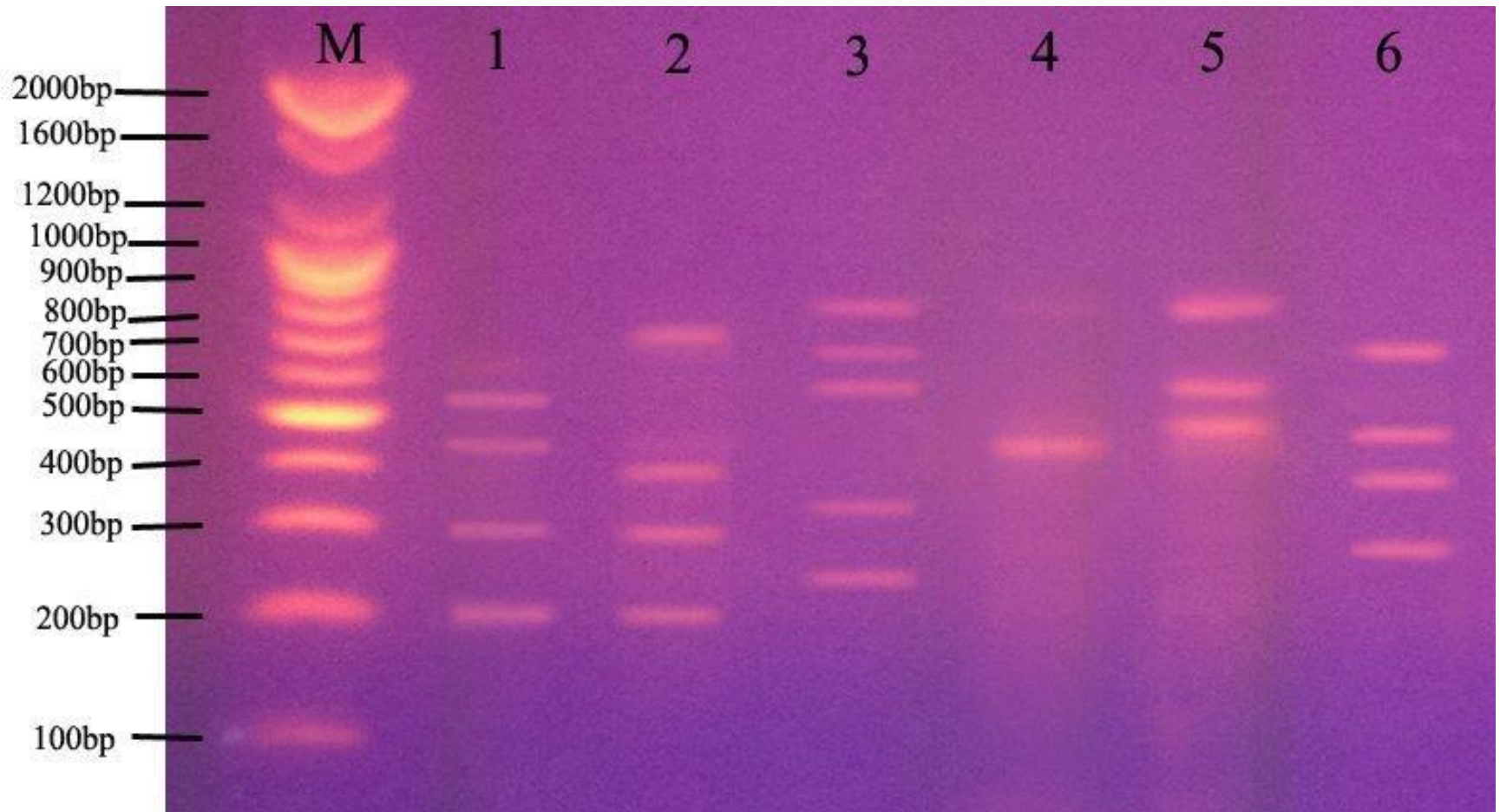
What are the two modifications made to typical thermal cycling when RAPD is being done?

Q8// Draw the protocol of RAPD technique?



Q9//

What is the primer were showed the highest polymorphism among genomes?



Q10// What is RFLP technique?

Q11// Why, the single locus probe (SLP)-RFLP method is preferred over multi (MLP)-RFLP?

A-

B-

C-

Q12// What are the primers were showed the highest polymorphism genomes between these groups?

